

EXPERIENCE  
YOUR ENVIRONMENT



**Osprey Wilds**  
Environmental Learning Center



# ANNUAL REPORT FY2025

JULY 1, 2024 - JUNE 30, 2025

54165 Audubon Drive  
Sandstone, MN 55072

OspreyWilds.org  
320-245-2648

# TABLE OF CONTENTS

|                                    |       |
|------------------------------------|-------|
| <b>ABOUT US</b>                    | 4-5   |
| <b>PROGRAMS</b>                    | 6     |
| <b>K-12 ENVIRONMENTAL LEARNING</b> | 6     |
| <b>WILDLIFE OUTREACH</b>           | 6     |
| <b>SCHOLARSHIPS</b>                | 7     |
| <b>OTHER PROGRAMMING</b>           | 7     |
| <b>CHARTER SCHOOL DIVISION</b>     | 8     |
| <b>OPERATIONS IMPROVEMENTS</b>     | 9     |
| <b>STAFF &amp; GOVERNING BOARD</b> | 10    |
| <b>FINANCIAL SUMMARY</b>           | 11    |
| <b>OUR DONORS</b>                  | 12-18 |

## LETTER FROM THE **BOARD PRESIDENT** AND **EXECUTIVE DIRECTOR**

### Dear Friends,

Huge milestones was the theme for the 2024-25 fiscal year for Osprey Wilds, with many big wins! Now, when a bus full of 6th graders enters our campus, they'll look out over our prairie to see three acres of solar arrays that began production in October of 2024.

This 716 kW solar farm generates three times the electricity that our campus uses, with the surplus sent back to the grid for use by our neighbors. It's a testament to our organizational values, and our fiscal responsibility.

Aside from clean energy wins, Osprey Wilds also won big at the legislative level last spring, to the point that Osprey Wilds has never been better positioned to make the outdoors accessible to Minnesota K-12 students!

Recently passed state legislation means that K-12 students now attending Osprey Wilds can be supported by tuition scholarships, transportation support, and teacher stipends covered through a \$3.992 million LCCMR grant that is shared among Minnesota's five outdoor schools over the next three years. Funding for this project was provided by the Minnesota Environment and Natural Resources Trust Fund as recommended by the Legislative-Citizen Commission on Minnesota Resources (LCCMR).

Even more exciting for the long-term future of K-12 outdoor education is the historic and bipartisan passage of the Outdoor School For All Minnesota bill. In June 2024, Minnesota became only the fourth state in the nation to pass this legislation. This grant program, administered by the Minnesota DNR, provides funding for overnight outdoor school programs for grades 4 through 12 at accredited outdoor schools in Minnesota, of which Osprey Wilds is one of five.

Looking to the future and working with an architecture firm, we also developed a Campus Master Plan to guide us in the future development of our campus. We look forward implementing these ideas to better provide exceptional programs to you and K-12 students.

The support from individuals like you has made all that we accomplished last year possible. You support our operations, our staff and our programs and allow us to keep delivering better on our mission. We are heartened by our successes and our support, and we hope you feel a sense of pride in being part of an organization making a real difference in the lives of so many individuals and for the environment.

With Gratitude,



**Steve McNeill**  
President, Board of Directors



**Bryan Wood**  
Executive Director

# ABOUT US

Osprey Wilds Environmental Learning Center is a 501(c)(3) public charity, outdoor school, and conference & retreat center located on Grindstone Lake in Sandstone, Minnesota.

## MISSION

To instill a connection and commitment to the environment in people of all communities through experiential learning

## VISION

A healthy planet where all people live in balance with the Earth



## CORE VALUES

**Healthy Relationships** – We demonstrate respect, care and passion for the earth, all people and all living things, recognizing our interconnectedness with each other and the natural world.

**Equity** – We actively incorporate the lenses of equity and representation in our education, environmentalism, and leadership.

**Action** – We practice and encourage informed, intentional living that helps restore and maintain healthy ecosystems.

**Life-long Learning** – We promote life-long learning through positive shared experiences with the natural world.

*The initial letters of our core values form the acronym HEAL, a reminder that demonstrating these values can result in healing for ourselves, others, and the planet.*

## EQUITY STATEMENT

Osprey Wilds actively incorporates the lenses of equity and representation in our education, environmentalism and leadership. We do this by dismantling and re-designing processes and systems to be accessible to and welcoming of all people; creating programs and services in collaboration with diverse communities; and valuing those who work with and for us.



## LAND ACKNOWLEDGMENT

Osprey Wilds acknowledges that our property sits upon the ancestral and traditional homelands of Indigenous people, most recently the Ojibwe, whose land was seized by the United States government by the Treaty of 1837 and colonized by European settlers. The Ojibwe continue to reside throughout East Central Minnesota and have a sovereign infrastructure of schools, roads, health care, services, housing, and more. From their ancestors to current day, the Ojibwe are committed to protecting and preserving natural resources. Osprey Wilds shares this commitment and works to ensure responsible care and attention through developing an understanding, ethics, and responsibility regarding the environment through formal and informal teaching that links nature and humans. While land acknowledgment does not deliver justice for the loss of the land and the damage done to people and cultures, Osprey Wilds will continue to deepen our knowledge and relationships, enriching practices that respect and honor the past, present, and future of the region's Indigenous communities.

# PROGRAMS

Educational programs are the heartbeat of Osprey Wilds and how we fulfill our mission. During the past fiscal year, we reached thousands of K-12 students, college students, families, and adults through our wide-ranging, accessible programs. Each participant that visits Osprey Wilds experiences something unique to them in nature, and carries that with them when they leave.

As an accredited K-12 school, our outdoor school programs provide important, hands-on experiences for today's youth, immersing them in the outdoors for multiple days at a time and opening their eyes to the beauty and the joy that can be found outdoors. Now more than ever, these outdoor experiences are critical for K-12 students.

While K-12 schools are our largest single audience, our programs offer something for all ages and communities, offering life-long learning opportunities for anyone interested. Last year, we impacted thousands of minds and hearts thanks to your support. We hope you enjoy reviewing the expansive reach our programs had last year. Together, look what we achieved!

## K-12 PROGRAMS

50

ATTENDING  
SCHOOLS

2,375

STUDENTS

Students across Minnesota, and out of state, visited our campus for one-day or multi-day field trips. **We had six new schools this year.**

Our K-12 on-site programming includes **overnight and day visitors from schools and community groups** that visit Osprey Wilds.



94

DAY  
CAMPERS

27

RESIDENTIAL  
CAMPERS

Our **summer camps** run for six weeks and include more K-12 environmental programming. Families can choose between residential or day camp options.



## WILDLIFE OUTREACH

Our Wildlife Outreach programs bring wildlife education to students and adults. These off-site events allow our naturalists and wildlife coordinator to engage audiences using our Educational Animal Ambassadors.



945

WILDLIFE  
OUTREACH  
LEARNERS

4

WILDLIFE  
OUTREACH  
PROGRAMS

# OTHER PROGRAMMING

Our work spans many categories and groups. Learn more about our diverse portfolio of learners and program categories below.

**COLLEGE**

We work with higher education institutions to offer college credit courses throughout the year, including a January interim course and Hamline University graduate classes.



**165**  
LEARNERS

**COMMUNITY**


Our community programs are open to all, and include our Dinner at the Lake series, WILD Workshops, Maple Syrup Day, community meals, and volunteer weekends.



**341**  
LEARNERS

**ADULTS**

We provide many learning opportunities for adults of all ages, including Women's Wellness Weekend, Road Scholar programs, and NAI Certified Interpretive Guide Workshops.



**351**  
LEARNERS

**FAMILY**

Our family programming brings generations together through the outdoors, and includes Winter Family Weekend and Road Scholar Intergenerational events.



**44**  
LEARNERS

# SCHOLARSHIPS

Osprey Wilds offers scholarships to assist students, schools, and people of all ages to visit our campus and participate in our programming.

**3-DAY K-12 STUDENT VISIT COST BREAKDOWN**

Cost per K-12 student: **\$386.75**

Amount charged per K-12 student: **\$185**

**Gap your donations help fund: **\$201.75****

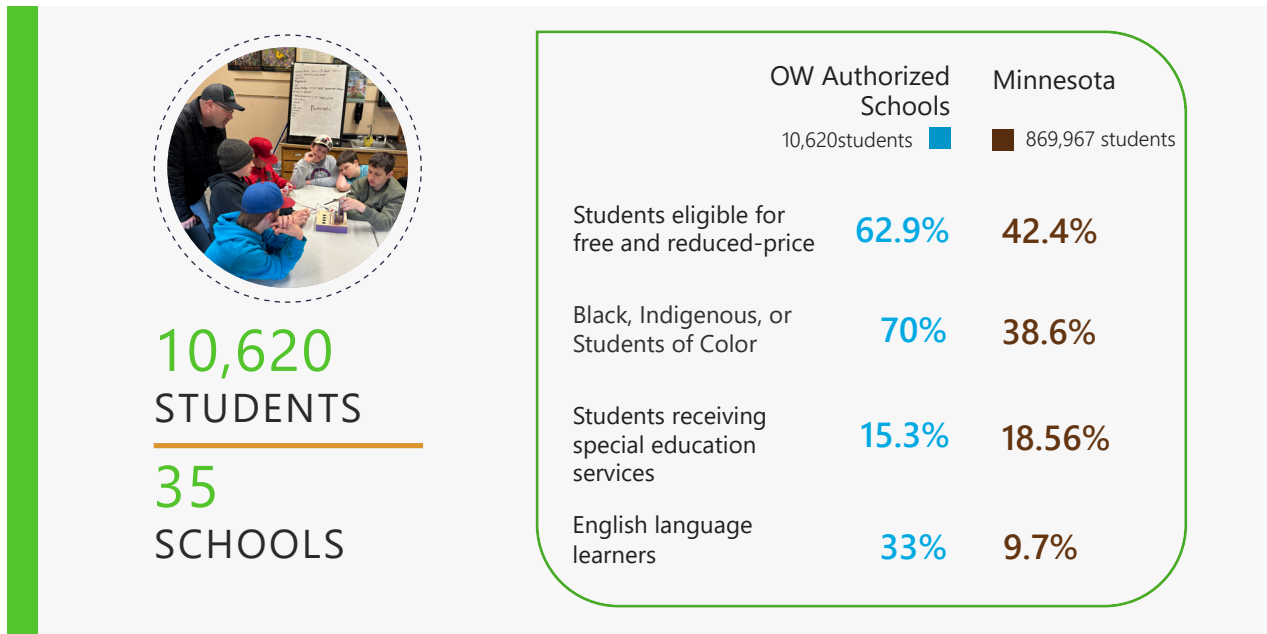
| SCHOLARSHIPS AWARDED |           |
|----------------------|-----------|
| K-12 SCHOOLS         | \$171,215 |
| COLLEGE COURSES      | \$6,984   |
| RESIDENTIAL CAMPS    | \$13,775  |
| DAY CAMPS            | \$26,105  |
| FAMILY CAMPS         | \$7,875   |
| ADULT PROGRAMS       | \$3,123   |

**\$299,077**

Total amount awarded in scholarships for all programming from July 1, 2024 - June 30, 2025

# CHARTER SCHOOL DIVISION

In Fiscal Year 2025 (July 1, 2024-June 30, 2025), the Charter School Division (CSD) of Osprey Wilds Environmental Learning Center continued its work to make sure Minnesota students receive a high-quality education and learn about the environment. Osprey Wilds authorized 35 charter schools serving a wide range of communities across the state.



Throughout the year, Osprey Wilds completed in-depth reviews of every school’s academics, finances, and governance. Ten schools went through the renewal process, which also included review of the school’s environmental education and operational performance. Eight received new contracts, one merged with another Osprey Wilds school, and one closed.

Schools continued to recover academically from the pandemic. Staffing challenges (especially in special education) were still present but less common. Osprey Wilds supported schools’ environmental education programs through EE Office Hours, one-on-one help with Environmental Literacy Plans, and by sharing professional development opportunities.

Financially, schools faced pressure as pandemic relief funds ended, federal priorities changed, and enrollment numbers shifted. Osprey Wilds provided technical support focused on budgeting, financial policies, and corrective action planning to help schools stay financially strong.

The Charter School Division also provided ongoing training and resources for school leaders and boards. Topics included new laws, required board training, and implementation of the READ Act. The Sounding Board newsletter offered guidance on good governance and communication, including how to keep families and communities informed.

Overall, FY25 was a year of stabilization and progress. Osprey Wilds strengthened its oversight of academics, environmental education, finances, and operations while deepening its support for school leadership and effective governance.

# OPERATIONS IMPROVEMENTS

The operations team has accomplished a lot this year even with chronic unfilled positions on our team. See below for a series of highlights and improvements from the last fiscal year.

- Produced 205 gallons of maple syrup - one of our top years!
- Joined the Adopt-A-Highway program by adopting the part of Fox Road adjacent to our property
- Partnered with Lakes and Pine Community Action Council to host Oak 4, an AmeriCorps NCCC North Central Region team. They helped greatly with our maple syrup production
- Added a gently used Ford Transit 15 passenger van to our fleet
- Installed a new control monitoring system for our geo-thermal/HVAC system in our Dining Hall and Crosby Lodge
- Served over 150 free meals at our annual Turkey Feast To-Go
- Secured funding for another 30' X 72' high tunnel hoop house that will expand our production and extend our growing season at Trapp Farm
- Volunteers painted the exterior of Lowry Lodge
- Completed our 716 kW Solar Prairie Garden project that will produce over 1 million kWh annually
- Planted 4 pear trees and 10 apple trees at Trapp Farm



# STAFF

## ADMINISTRATIVE

Bryan Wood, Executive Director  
Jill Rudolph, Operations Director  
Jim DeYoung, Development Director  
Ruth Emerson, Finance Administrator  
Kaden Mettel, Marketing Specialist  
Janette Nash, Front Desk/Receptionist  
Jamie Delton, IT Coordinator

## CHARTER SCHOOL DIVISION

Erin Anderson, Director of Charter School  
Authorizing  
Emily Edstrom Moore, Authorizing Specialist –  
Academics  
Ashley Estis, Authorizing Specialist, Charter School  
Leadership  
Pat Hartman, Authorizing Specialist – School  
Sustainability  
Addie Mazza, Authorizing Specialist, Technical  
Assistance  
Jolene Palme, Finance & Compliance Analyst

## EDUCATION

Jordan Zabel, Program Services Coordinator  
Regina Lobner, Wildlife Coordinator  
Stephanie Champ, K-12 Advancement Specialist  
Glenn Sayre, Wildlife Assistant

## ENVIRONMENTAL EDUCATOR FELLOWS

Rellian de Graaf  
Sarah Montzka  
Vi Schafer  
Harper Wood

## FACILITIES

Kimberly Johnson, Housekeeper  
Morgan Moris, Housekeeper  
Adrene Dorau, Housekeeper

## FOOD SERVICE

Amy Smyser, Food Service Manager  
Sherri Ortman, Head Cook  
Danny Covey, Dishwasher  
Dave Chasson, Dishwasher

# GOVERNING BOARD

Don Arnosti  
Heidi Bringman  
Deb Curran  
Amy Daly, Vice President  
Angela Dawson  
Samba Fall

Tammy Fleming, Secretary  
Don Janes, Treasurer  
Barbara Lindeke  
Steven McNeill, President  
Aiysha Mustapha  
Bill Owens

Jessica Prenzlou-Morgan  
Brooke Roper  
Chris Steele  
Don Verbick  
Andre Xiong

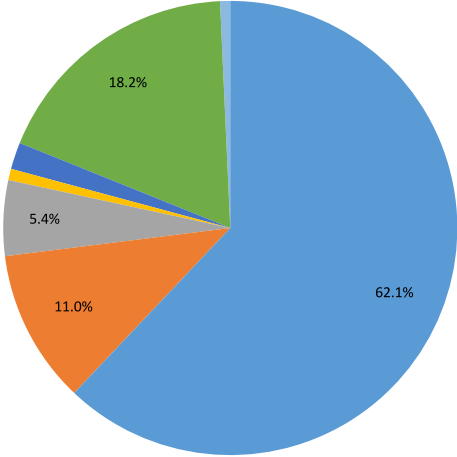
Staff & Governing Board as of June 30, 2025

# FINANCIAL SUMMARY

| INCOME                   |                    |
|--------------------------|--------------------|
| PROGRAM FEES             | \$1,709,017        |
| CONTRIBUTIONS            | \$301,747          |
| INVESTMENT INCOME        | \$147,918          |
| GRANTS                   | \$22,203           |
| MERCHANDISE & FARM SALES | \$52,641           |
| MISC INCOME              | \$19,868           |
| <b>TOTAL INCOME</b>      | <b>\$2,753,837</b> |

FY25 Income

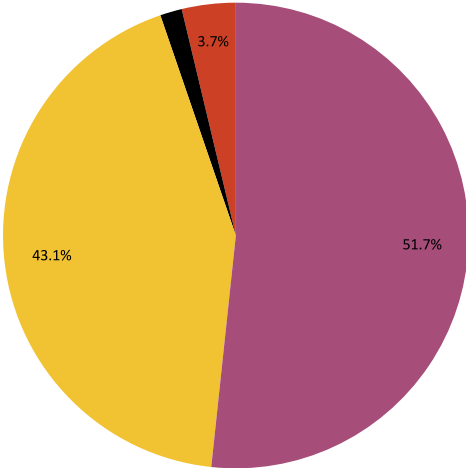
- Program Fees
- Contributions
- Investment Income
- Grants
- Merchandise & Farm Sales
- Contract for Deed Income
- Misc Income



| EXPENSE              |                    |
|----------------------|--------------------|
| PAYROLL              | \$1,378,099        |
| PROGRAM SERVICES     | \$1,148,083        |
| RESTRICTED EXPENSES  | \$40,532           |
| LOAN/INTEREST        | \$99,672           |
| <b>TOTAL EXPENSE</b> | <b>\$2,666,387</b> |

FY25 Expense

- Payroll
- Program Services
- Restricted Expenses
- Loan/Interest



|                     |                  |
|---------------------|------------------|
| <b>NET INCOME</b>   | <b>\$87,450</b>  |
| <b>DEPRECIATION</b> | <b>\$209,637</b> |

Note: based on audited financials



# OUR DONORS

Your generous gifts touched the lives of more than 13,000 children and adults in 2024-2025! Nearly 350 of you made gifts totaling more \$322,600, powering our array of outdoor learning programs, meeting special needs for campus maintenance and improvements, and bolstering Osprey Wilds' financial strength for the future.

The bulk of that total, about \$210,500, went toward program costs for our K-12 outdoor school visits, summer camps, wildlife outreach, adult, family, and community programs. Gifts designated for other purposes included \$15,650 for scholarships and more than \$55,000 for a variety of campus needs and initiatives, most notably a replacement bridge over Windmill Creek, a 16-acre native grassland restoration project, the purchase of kitchen equipment and a commercial washer and dryer, and construction of a second hoop house at Trapp Farm.

This year's total also included a gift, \$35,600, from the estate of Donald H. Nelson, a Rochester orthodontist, investor, and landowner who left millions to a score of organizations and institutions that reflected his vision for environmental preservation and education. This follows the initial distribution of \$330,000 we received after Dr. Nelson's passing in 2023; together these gifts constitute the largest cash bequest ever given to Osprey Wilds and a tremendous boost to our endowment fund, which grows to help meet future needs, while providing annual income for operations and special projects.

In addition to contributions received this fiscal year, we also saw a gift made in 2021 come to fruition. When the Blacklock Nature Sanctuary donated their 400-acre property and financial assets to Osprey Wilds in 2021, included in that was a contract for deed on a property on the North Shore. Payments from the contract have bolstered Osprey Wilds' revenue stream since the transfer, and in December 2024 we received a final balloon payment of \$500,000.

Giving in 2024-2025 demonstrated the full range of ways that you support Osprey Wilds financially—from the faithful contributions of the monthly Sustainer or the annual supporter, to the once-in-a-lifetime gift of property, to the bequest left as a legacy of a life committed to environmental care.

Wherever you are in that continuum, we value your partnership. You are foundational to our continued success in helping thousands of people of all ages make meaningful connections with the natural world and grow in their commitment to its preservation. You are making a very real difference!



## \$10,000 +

---

|                        |                        |
|------------------------|------------------------|
| Shirley Baxter         | Richard & Joan Newmark |
| Donald H. Nelson Trust | Gail & Chris Steele    |
| Patricia Hapke         | Marilyn Thompson       |
| Donald Janes           | Caroline Vernon        |
| Linda Marcotte         |                        |

## \$2,500-\$9,999

---

|                                     |                              |                                  |
|-------------------------------------|------------------------------|----------------------------------|
| Darlene & Lockwood Carlson          | Karl & Susan Hunt Gutknecht  | Robert S. Hunter Charitable Fund |
| East Central Energy                 | Gretchen Koehler             | Roy & Margaret Sebald            |
| Ecolab                              | Judith Loescher              | John & Lynn Stevens              |
| Ellison Family Charitable Gift Fund | Steve & Susan McNeill        | Don & Mary Verbick               |
| Anna Gerenday                       | Members Cooperative CU       | Debra & John Zyla                |
| Richard & Constance Glattly         | Renee Potts Lane Family Fund |                                  |

## \$1,000-\$2,499

---

|                       |                                |                               |
|-----------------------|--------------------------------|-------------------------------|
| Irene Andersen        | Tammy Fleming                  | North Risk Partners           |
| Gordon Andersson      | Wayne & Anna Johnson           | Jim & Wilda Obey              |
| Don & Meg Arnosti     | Alex Johnston                  | Jessica Olen                  |
| Gary & Nancy Blasberg | Charles Lea                    | Diane & Darryl Sannes         |
| Boker's Inc.          | Don & Roxanne Maiers*          | Tom & Joan Tallman            |
| Peter Carlson         | Soltek                         | Frank Voigt                   |
| John & Barbara Cloues | Barbara Mauzy                  | Charles & Catherine VonRueden |
| David Cross           | Walter & Clara Ueland McCarthy | David & Pearl Wright          |
| Debra & Mike Curran   | Judy McConnell                 |                               |
| Larry & Nancy Dolphin | Stan & Susanne Meyer           |                               |
| Barbara Dunn          | Steven Mizuno                  |                               |
| Sid Ferguson          | Mora Traveling Baseball Assn   |                               |

## \$500-\$999

---

|                          |                                 |                         |
|--------------------------|---------------------------------|-------------------------|
| Paige Anderson*          | Jim & Sue DeYoung*              | Lois Kunze              |
| Jim & Nancy Azarski      | Samba Fall                      | Barbara Lindeke         |
| Donna Becker             | Bill Foss                       | Becky Lourey*           |
| Susan & Mark Behrends    | Lois Gernbacher                 | Tom & Phyllis Mahan     |
| Berchin's A&W Restaurant | Michael & Teresa Hejny*         | William & Candace Marx  |
| Judith Brumfield*        | Julie & Brian Holly             | Deborah & Ronald McCabe |
| Amy Daly*                | Kendall-Milton Charitable Trust | Dennis & Margaret Meyer |
| Brian & Alena DeYoung*   | Roger Knudson                   | Carol Mizuno            |

\*Osprey Wilds Sustainer

## \$500-\$999 Cont.

---

|                                      |                          |                                  |
|--------------------------------------|--------------------------|----------------------------------|
| Jean Nelson                          | Patricia Rainer*         | Thrivent Financial for Lutherans |
| Lois Norrgard*                       | Ashley Roemhild*         | Elaine Thrune                    |
| Northern Pine Riders Snowmobile Club | Michelle Rozales         | U.S. Bank Charities Aid Fdn      |
| Northview Bank                       | St. Paul & MN Foundation | Zakelj Watkins Household         |
| Bill & Sheila Owens                  | Schmidt Law + Consulting |                                  |
|                                      | Craig Stowell            |                                  |

## \$250-\$499

---

|                               |                          |                         |
|-------------------------------|--------------------------|-------------------------|
| Erin Anderson*                | Steve & Alice Gruber*    | Jeanne Norrgard*        |
| Tami & David Greenberg Bauers | Nancy Haugen             | Polaris                 |
| Mary Beck*                    | Wesley Haut              | Elizabeth Pomper*       |
| Bill & Beth Blank             | Sonja & Joe Hendrickson* | Jessica Prenzlou-Morgan |
| Loren & Rosemary Brabec*      | Craig & Yvette Hewitt    | Diana Rankin*           |
| Heidi Bringman                | Thomas Houle             | Jill Rudolph*           |
| Marcia Cheeseman              | Dee & Greg Koivisto*     | Deb & Rick Scheil       |
| Robert & Rorie Chinnock       | Jane & Randy Koza        | Timothy Whitfeld*       |
| Mike Clark                    | Candace Kyte             | Mary Wickstrom          |
| Daniel & Jeanne Doty          | Karen Larson             | Bryan Wood*             |
| Elaine Duvall*                | Kristen & James Lindberg | Neal Young              |
| Rodney & Sue Foss             | Margaret Lindstrom*      | Jordan & Alissa Zabel   |
| Nancy Gongoll                 | Matt & Maddy Masucci*    |                         |
| Daniel Green                  | David Nelson*            |                         |

## \$100-\$249

---

|                           |                         |                            |
|---------------------------|-------------------------|----------------------------|
| Michael & Laurie Fischer  | Jane & Brian Kise       | Gwen & Mason Myers         |
| Rick Fletcher             | Sherri & Daniel Leverty | Terry & Robert Nelson      |
| Barbara Franklin          | Mark Lex                | Karen Nielsen              |
| Monte Gomke               | Mike Link               | Jean & Joanne Oliphant     |
| Anna May Goyette          | Paul Lyons              | Laureen Overway            |
| Hanley Skinner Household* | Carol Mansfield         | Janis & James Parkman      |
| Marianne* Hauert          | Nina Manzi              | JoAnn & George Perdrizet   |
| Annie & Oliver Hejny*     | Howard & Lynne Markus   | Pfaller Wolforth Household |
| John & Linda Hickman      | Wendy Marty             | William & Naomi Pomper     |
| Barb & John Holm          | Laureen & Kevin McCalib | Christine Pudney*          |
| Bob & Judy Horn           | Chester & Miriam Meyers | Julianne Ratliff*          |
| Charles & Nancy Huber     | Moench Family           | Erik Rigelhof*             |
| Paulette Huddle*          | Gary & Patty Mondale    | Joel & Gail Roberts        |
| Amy Kersey                | Charles & Diana Moore   | Theron (Terry) Salmela     |

\*Osprey Wilds Sustainer

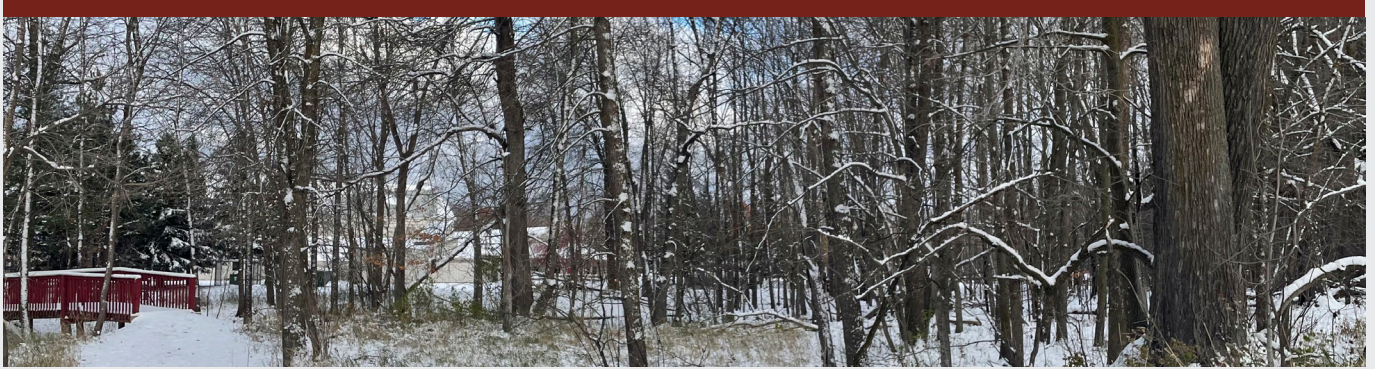
## \$100-\$249 Cont.

---

Eric & Jacquelyn Saunders  
Amber Sausen  
Eileen Schantz-Hansen  
Kenneth Schirmuhly  
Kevin & Christine Schneider  
Darlene & Glen Scott

Carolyn Serrano  
Jim & Mary Kay Sloan  
Steve Smith  
Sophia Strandberg  
Stephen Sundquist  
Ingrid Swanson

Barry Tedlund  
Diane Tessari  
Veronica Tingle  
Tom Torborg\*



## \$5-\$99

---

Ross Anderson  
Jeffrey Apland  
Helen Balcome  
Cindy Bean  
Richard Bialek  
Boeing  
Mark Brigham\*  
Pat Cleveland  
George & Mary Crambes  
Kate Crowley  
Dakota County Library  
Adam De Leeuw  
Alanna Dore  
David Eagan  
Kenneth Edstrom  
Enbridge  
Edward Evans  
Barb Evers  
Christa Fangmeier  
Shari Flesness  
Zach Garman  
Carly Gelderman\*

Gornick-Patton Household  
Julie Greenberg  
Bob & Marce Hemming  
Ruth Hiland  
Shirley Howell  
Richard & Lynn Huebsch  
Rob Jarvias  
Al & Lyn Johnson  
Paul Johnson  
Teresa Kempenich  
Scott Kluegel  
Louise Kneeland  
Josette Koets  
Dee Kotaska  
Barbara Krig\*  
Steve Kuchera  
Sabrina Lau  
Louise Letnes  
Elsie Lundorff  
Savannah Maiers  
Laverne Mans  
Jeanne Markell

Steven & Laura McCaughan  
Emily McNeil  
Craig & Laurie Meyer  
Nadine Meyer  
Don & Elisa Mill  
Jenna Moon  
Neumann Penny Household  
Mary & Dan Nicklay  
Kate Nicoletti  
Dale Nordquist  
Anne Odberg  
John & Yvette Oldendorf  
Gayla & Dennis Olson  
Margaret & Larry Peitersen  
Amy Peterson Brookman  
Justin Peterson  
Cheryl Ramette  
Richard Hamilton Smith  
Photography  
Donna Rogers  
Katherine Salverda  
Beverly Schleper

\*Osprey Wilds Sustainer

## \$5-\$99 Cont.

---

|                         |                        |
|-------------------------|------------------------|
| Karl Smith              | Jared VanSpeybroeck    |
| Gerald Stark            | Jane Wachutka          |
| Gale Toensing           | Pete & Pat Webster     |
| Nancy Jo Tubbs          | Wells Fargo Foundation |
| Turner Rodine Household | James Willenbring      |
| Gary & Bonnie Van Erp   | Barb & Carl Wojahn     |
| Sue & Don VanGorden     | Douglas & Kathy Wood   |



## In Memory of

---

|                   |                         |                   |
|-------------------|-------------------------|-------------------|
| Katherine Bade    | Hope H. Lea             | Jerry Wagner      |
| Mary Clark        | Lawrence & Mary Mans    | Joe White         |
| Chris Crutchfield | Ray & Sylvia Marcotte   | Carl Johan Wiberg |
| Matthew Green     | Stanley Meyer           | Ernie Willenbring |
| George Knuteson   | Fred Nylene             |                   |
| Paul Larson       | Wesley "Burt" Sundquist |                   |

## In Honor of

---

Don & Meg Arnosti  
Betty Crosby  
Lee & Dorothy Dybvig  
Elaine  
Regina Lobner  
Steve & Sue McNeil  
Jessica Prenzlou-Morgan  
Staff, Directors & Volunteers  
Wesley "Burt" Sundquist  
Emma Tingle

We make every effort to ensure the accuracy of this list. If you notice any errors, please accept our apologies and contact us with the needed corrections at 320-245-7791 or [development@ospreywilds.org](mailto:development@ospreywilds.org).



# Osprey Wilds

## Environmental Learning Center



54165 Audubon Drive  
Sandstone, MN 55072  
OspreyWilds.org  
320-245-2648