

EXPERIENCE
YOUR ENVIRONMENT



Osprey Wilds
Environmental Learning Center



ANNUAL REPORT FY2025

JULY 1, 2024 - JUNE 30, 2025

54165 Audubon Drive
Sandstone, MN 55072
OspreyWilds.org
320-245-2648

TABLE OF CONTENTS

ABOUT US	4-5
PROGRAMS	6
K-12 ENVIRONMENTAL LEARNING	6
WILDLIFE OUTREACH	6
SCHOLARSHIPS	7
OTHER PROGRAMMING	7
CHARTER SCHOOL DIVISION	8
OPERATIONS IMPROVEMENTS	9
STAFF & GOVERNING BOARD	10
FINANCIAL SUMMARY	11
OUR DONORS	12-18

LETTER FROM THE **BOARD PRESIDENT** AND **EXECUTIVE DIRECTOR**

Dear Friends,

Huge milestones was the theme for the 2024-25 fiscal year for Osprey Wilds, with many big wins! Now, when a bus full of 6th graders enters our campus, they'll look out over our prairie to see three acres of solar arrays that began production in October of 2024.

This 716 kW solar farm generates three times the electricity that our campus uses, with the surplus sent back to the grid for use by our neighbors. It's a testament to our organizational values, and our fiscal responsibility.

Aside from clean energy wins, Osprey Wilds also won big at the legislative level last spring, to the point that Osprey Wilds has never been better positioned to make the outdoors accessible to Minnesota K-12 students!

Recently passed state legislation means that K-12 students now attending Osprey Wilds can be supported by tuition scholarships, transportation support, and teacher stipends covered through a \$3.992 million LCCMR grant that is shared among Minnesota's five outdoor schools over the next three years. Funding for this project was provided by the Minnesota Environment and Natural Resources Trust Fund as recommended by the Legislative-Citizen Commission on Minnesota Resources (LCCMR).

Even more exciting for the long-term future of K-12 outdoor education is the historic and bipartisan passage of the Outdoor School For All Minnesota bill. In June 2024, Minnesota became only the fourth state in the nation to pass this legislation. This grant program, administered by the Minnesota DNR, provides funding for overnight outdoor school programs for grades 4 through 12 at accredited outdoor schools in Minnesota, of which Osprey Wilds is one of five.

Looking to the future and working with an architecture firm, we also developed a Campus Master Plan to guide us in the future development of our campus. We look forward implementing these ideas to better provide exceptional programs to you and K-12 students.

The support from individuals like you has made all that we accomplished last year possible. You support our operations, our staff and our programs and allow us to keep delivering better on our mission. We are heartened by our successes and our support, and we hope you feel a sense of pride in being part of an organization making a real difference in the lives of so many individuals and for the environment.

With Gratitude,



Steve McNeill
President, Board of Directors



Bryan Wood
Executive Director

ABOUT US

Osprey Wilds Environmental Learning Center is a 501(c)(3) public charity, outdoor school, and conference & retreat center located on Grindstone Lake in Sandstone, Minnesota.

MISSION

To instill a connection and commitment to the environment in people of all communities through experiential learning

VISION

A healthy planet where all people live in balance with the Earth



CORE VALUES

Healthy Relationships – We demonstrate respect, care and passion for the earth, all people and all living things, recognizing our interconnectedness with each other and the natural world.

Equity – We actively incorporate the lenses of equity and representation in our education, environmentalism, and leadership.

Action – We practice and encourage informed, intentional living that helps restore and maintain healthy ecosystems.

Life-long Learning – We promote life-long learning through positive shared experiences with the natural world.

The initial letters of our core values form the acronym HEAL, a reminder that demonstrating these values can result in healing for ourselves, others, and the planet.

EQUITY STATEMENT

Osprey Wilds actively incorporates the lenses of equity and representation in our education, environmentalism and leadership. We do this by dismantling and re-designing processes and systems to be accessible to and welcoming of all people; creating programs and services in collaboration with diverse communities; and valuing those who work with and for us.



LAND ACKNOWLEDGMENT

Osprey Wilds acknowledges that our property sits upon the ancestral and traditional homelands of Indigenous people, most recently the Ojibwe, whose land was seized by the United States government by the Treaty of 1837 and colonized by European settlers. The Ojibwe continue to reside throughout East Central Minnesota and have a sovereign infrastructure of schools, roads, health care, services, housing, and more. From their ancestors to current day, the Ojibwe are committed to protecting and preserving natural resources. Osprey Wilds shares this commitment and works to ensure responsible care and attention through developing an understanding, ethics, and responsibility regarding the environment through formal and informal teaching that links nature and humans. While land acknowledgment does not deliver justice for the loss of the land and the damage done to people and cultures, Osprey Wilds will continue to deepen our knowledge and relationships, enriching practices that respect and honor the past, present, and future of the region's Indigenous communities.

PROGRAMS

Educational programs are the heartbeat of Osprey Wilds and how we fulfill our mission. During the past fiscal year, we reached thousands of K-12 students, college students, families, and adults through our wide-ranging, accessible programs. Each participant that visits Osprey Wilds experiences something unique to them in nature, and carries that with them when they leave.

As an accredited K-12 school, our outdoor school programs provide important, hands-on experiences for today’s youth, immersing them in the outdoors for multiple days at a time and opening their eyes to the beauty and the joy that can be found outdoors. Now more than ever, these outdoor experiences are critical for K-12 students.

While K-12 schools are our largest single audience, our programs offer something for all ages and communities, offering life-long learning opportunities for anyone interested. Last year, we impacted thousands of minds and hearts thanks to your support. We hope you enjoy reviewing the expansive reach our programs had last year. Together, look what we achieved!

K-12 PROGRAMS

50


ATTENDING
SCHOOLS

2,375

STUDENTS

Students across Minnesota, and out of state, visited our campus for one-day or multi-day field trips. **We had six new schools this year.**

Our K-12 on-site programming includes **overnight and day visitors from schools and community groups** that visit Osprey Wilds.




94

DAY
CAMPERS

27

RESIDENTIAL
CAMPERS

Our **summer camps** run for six weeks and include more K-12 environmental programming. Families can choose between residential or day camp options.



WILDLIFE OUTREACH

Our Wildlife Outreach programs bring wildlife education to students and adults. These off-site events allow our naturalists and wildlife coordinator to engage audiences using our Educational Animal Ambassadors.



945

WILDLIFE
OUTREACH
LEARNERS

4

WILDLIFE
OUTREACH
PROGRAMS

OTHER PROGRAMMING

Our work spans many categories and groups. Learn more about our diverse portfolio of learners and program categories below.

COLLEGE

We work with higher education institutions to offer college credit courses throughout the year, including a January interim course and Hamline University graduate classes.



165
LEARNERS

COMMUNITY


Our community programs are open to all, and include our Dinner at the Lake series, WILD Workshops, Maple Syrup Day, community meals, and volunteer weekends.



341
LEARNERS

ADULTS

We provide many learning opportunities for adults of all ages, including Women's Wellness Weekend, Road Scholar programs, and NAI Certified Interpretive Guide Workshops.



351
LEARNERS

FAMILY

Our family programming brings generations together through the outdoors, and includes Winter Family Weekend and Road Scholar Intergenerational events.



44
LEARNERS

SCHOLARSHIPS

Osprey Wilds offers scholarships to assist students, schools, and people of all ages to visit our campus and participate in our programming.

**3-DAY K-12 STUDENT VISIT
COST BREAKDOWN**

Cost per K-12 student: **\$386.75**

Amount charged per K-12 student: **\$185**

Gap your donations help fund: **\$201.75**

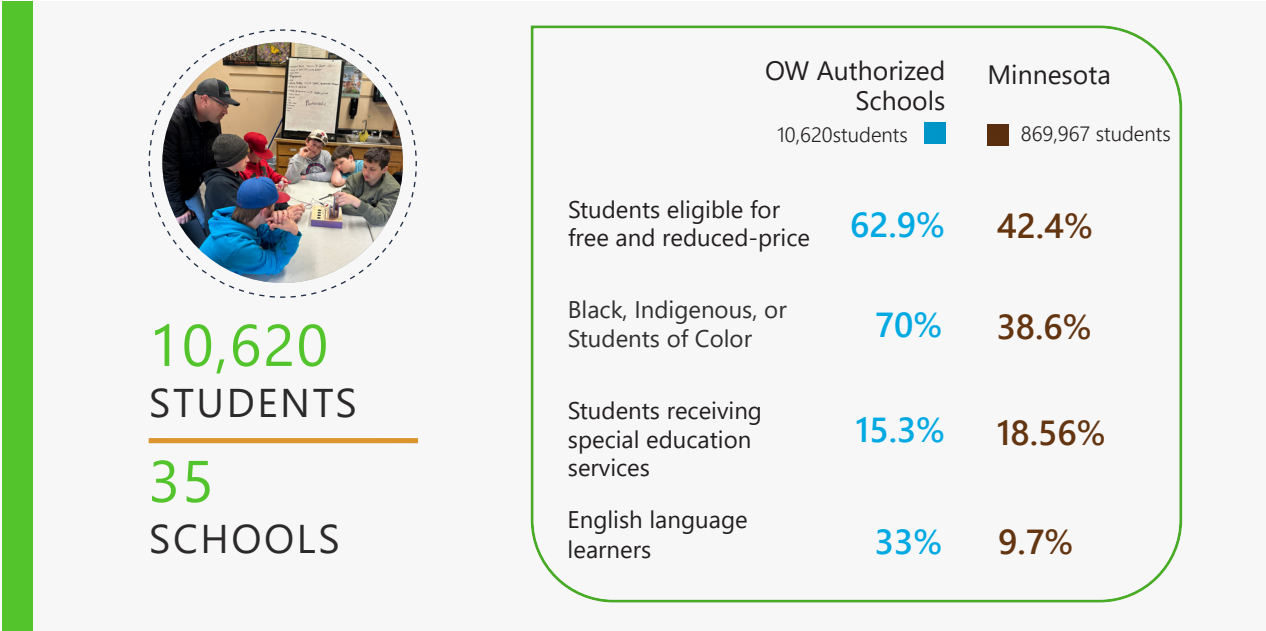
SCHOLARSHIPS AWARDED	
K-12 SCHOOLS	\$171,215
COLLEGE COURSES	\$6,984
RESIDENTIAL CAMPS	\$13,775
DAY CAMPS	\$26,105
FAMILY CAMPS	\$7,875
ADULT PROGRAMS	\$3,123

\$299,077

Total amount awarded in scholarships for all programming from July 1, 2024 - June 30, 2025

CHARTER SCHOOL DIVISION

In Fiscal Year 2025 (July 1, 2024-June 30, 2025), the Charter School Division (CSD) of Osprey Wilds Environmental Learning Center continued its work to make sure Minnesota students receive a high-quality education and learn about the environment. Osprey Wilds authorized 35 charter schools serving a wide range of communities across the state.



Throughout the year, Osprey Wilds completed in-depth reviews of every school’s academics, finances, and governance. Ten schools went through the renewal process, which also included review of the school’s environmental education and operational performance. Eight received new contracts, one merged with another Osprey Wilds school, and one closed.

Schools continued to recover academically from the pandemic. Staffing challenges (especially in special education) were still present but less common. Osprey Wilds supported schools’ environmental education programs through EE Office Hours, one-on-one help with Environmental Literacy Plans, and by sharing professional development opportunities.

Financially, schools faced pressure as pandemic relief funds ended, federal priorities changed, and enrollment numbers shifted. Osprey Wilds provided technical support focused on budgeting, financial policies, and corrective action planning to help schools stay financially strong.

The Charter School Division also provided ongoing training and resources for school leaders and boards. Topics included new laws, required board training, and implementation of the READ Act. The Sounding Board newsletter offered guidance on good governance and communication, including how to keep families and communities informed.

Overall, FY25 was a year of stabilization and progress. Osprey Wilds strengthened its oversight of academics, environmental education, finances, and operations while deepening its support for school leadership and effective governance.

OPERATIONS IMPROVEMENTS

The operations team has accomplished a lot this year even with chronic unfilled positions on our team. See below for a series of highlights and improvements from the last fiscal year.

Added a gently used Ford Transit 15 passenger van to our fleet

Produced 205 gallons of maple syrup - one of our top years!

Joined the Adopt-A-Highway program by adopting the part of Fox Road adjacent to our property

Partnered with Lakes and Pine Community Action Council to host Oak 4, an AmeriCorps NCCC North Central Region team. They helped greatly with our maple syrup production

Installed a new control monitoring system for our geo-thermal/ HVAC system in our Dining Hall and Crosby Lodge

Served over 150 free meals at our annual Turkey Feast To-Go

Volunteers painted the exterior of Lowry Lodge

Secured funding for another 30' X 72' high tunnel hoop house that will expand our production and extend our growing season at Trapp Farm

Completed our 716 kW Solar Prairie Garden project that will produce over 1 million kWh annually

Planted 4 pear trees and 10 apple trees at Trapp Farm



STAFF

ADMINISTRATIVE

Bryan Wood, Executive Director
Jill Rudolph, Operations Director
Jim DeYoung, Development Director
Ruth Emerson, Finance Administrator
Kaden Mettel, Marketing Specialist
Janette Nash, Front Desk/Receptionist
Jamie Delton, IT Coordinator

CHARTER SCHOOL DIVISION

Erin Anderson, Director of Charter School
Authorizing
Emily Edstrom Moore, Authorizing Specialist –
Academics
Ashley Estis, Authorizing Specialist, Charter School
Leadership
Pat Hartman, Authorizing Specialist – School
Sustainability
Addie Mazza, Authorizing Specialist, Technical
Assistance
Jolene Palme, Finance & Compliance Analyst

EDUCATION

Jordan Zabel, Program Services Coordinator
Regina Lobner, Wildlife Coordinator
Stephanie Champ, K-12 Advancement Specialist
Glenn Sayre, Wildlife Assistant

ENVIRONMENTAL EDUCATOR FELLOWS

Rellian de Graaf
Sarah Montzka
Vi Schafer
Harper Wood

FACILITIES

Kimberly Johnson, Housekeeper
Morgan Moris, Housekeeper
Adrene Dorau, Housekeeper

FOOD SERVICE

Amy Smyser, Food Service Manager
Sherri Ortman, Head Cook
Danny Covey, Dishwasher
Dave Chasson, Dishwasher

GOVERNING BOARD

Don Arnosti
Heidi Bringman
Deb Curran
Amy Daly, Vice President
Angela Dawson
Samba Fall

Tammy Fleming, Secretary
Don Janes, Treasurer
Barbara Lindeke
Steven McNeill, President
Aiysha Mustapha
Bill Owens

Jessica Prenzlou-Morgan
Brooke Roper
Chris Steele
Don Verbick
Andre Xiong

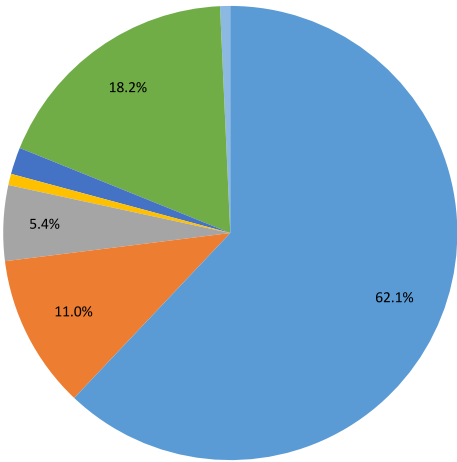
Staff & Governing Board as of June 30, 2025

FINANCIAL SUMMARY

INCOME	
PROGRAM FEES	\$1,709,017
CONTRIBUTIONS	\$301,747
INVESTMENT INCOME	\$147,918
GRANTS	\$22,203
MERCHANDISE & FARM SALES	\$52,641
MISC INCOME	\$19,868
TOTAL INCOME	\$2,753,837

FY25 Income

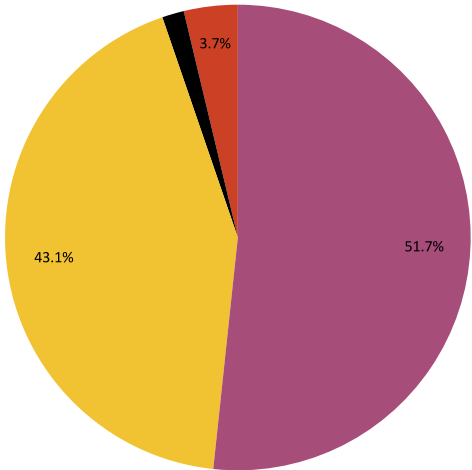
- Program Fees
- Contributions
- Investment Income
- Grants
- Merchandise & Farm Sales
- Contract for Deed Income
- Misc Income



EXPENSE	
PAYROLL	\$1,378,099
PROGRAM SERVICES	\$1,148,083
RESTRICTED EXPENSES	\$40,532
LOAN/INTEREST	\$99,672
TOTAL EXPENSE	\$2,666,387

FY25 Expense

- Payroll
- Program Services
- Restricted Expenses
- Loan/Interest



NET INCOME	\$87,450
DEPRECIATION	\$209,637

Note: based on audited financials



OUR DONORS

Your generous gifts touched the lives of more than 13,000 children and adults in 2024-2025! Nearly 350 of you made gifts totaling more \$322,600, powering our array of outdoor learning programs, meeting special needs for campus maintenance and improvements, and bolstering Osprey Wilds' financial strength for the future.

The bulk of that total, about \$210,500, went toward program costs for our K-12 outdoor school visits, summer camps, wildlife outreach, adult, family, and community programs. Gifts designated for other purposes included \$15,650 for scholarships and more than \$55,000 for a variety of campus needs and initiatives, most notably a replacement bridge over Windmill Creek, a 16-acre native grassland restoration project, the purchase of kitchen equipment and a commercial washer and dryer, and construction of a second hoop house at Trapp Farm.

This year's total also included a gift, \$35,600, from the estate of Donald H. Nelson, a Rochester orthodontist, investor, and landowner who left millions to a score of organizations and institutions that reflected his vision for environmental preservation and education. This follows the initial distribution of \$330,000 we received after Dr. Nelson's passing in 2023; together these gifts constitute the largest cash bequest ever given to Osprey Wilds and a tremendous boost to our endowment fund, which grows to help meet future needs, while providing annual income for operations and special projects.

In addition to contributions received this fiscal year, we also saw a gift made in 2021 come to fruition. When the Blacklock Nature Sanctuary donated their 400-acre property and financial assets to Osprey Wilds in 2021, included in that was a contract for deed on a property on the North Shore. Payments from the contract have bolstered Osprey Wilds' revenue stream since the transfer, and in December 2024 we received a final balloon payment of \$500,000.

Giving in 2024-2025 demonstrated the full range of ways that you support Osprey Wilds financially—from the faithful contributions of the monthly Sustainer or the annual supporter, to the once-in-a-lifetime gift of property, to the bequest left as a legacy of a life committed to environmental care.

Wherever you are in that continuum, we value your partnership. You are foundational to our continued success in helping thousands of people of all ages make meaningful connections with the natural world and grow in their commitment to its preservation. You are making a very real difference!



\$10,000 +

Shirley Baxter	Richard & Joan Newmark
Donald H. Nelson Trust	Gail & Chris Steele
Patricia Hapke	Marilyn Thompson
Donald Janes	Caroline Vernon
Linda Marcotte	

\$2,500-\$9,999

Darlene & Lockwood Carlson	Karl Gutknecht & Susan Hunt	Robert S. Hunter Charitable Fund
East Central Energy	Gretchen Koehler	Roy & Margaret Sebald
Ecolab	Judith Loescher	John & Lynn Stevens
Ellison Family Charitable Gift Fund	Steve & Susan McNeill	Don & Mary Verbick
Anna Gerenday	Members Cooperative CU	Debra & John Zyla
Richard & Constance Glattly	Renee Potts Lane Family Fund	

\$1,000-\$2,499

Irene Andersen	Tammy Fleming	North Risk Partners
Gordon Andersson	Wayne & Anna Johnson	Jim & Wilda Obey
Don & Meg Arnosti	Alex Johnston	Jessica Olen
Gary & Nancy Blasberg	Charles Lea	Diane & Darryl Sannes
Boker's Inc.	Don & Roxanne Maiers*	Tom & Joan Tallman
Peter Carlson	Soltek	Frank Voigt
John & Barbara Cloues	Barbara Mauzy	Charles & Catherine VonRueden
David Cross	Walter & Clara Ueland McCarthy	David & Pearl Wright
Debra & Mike Curran	Judy McConnell	
Larry & Nancy Dolphin	Stan & Susanne Meyer	
Barbara Dunn	Steven Mizuno	
Sid Ferguson	Mora Traveling Baseball Assn	

\$500-\$999

Paige Anderson*	Jim & Sue DeYoung*	Lois Kunze
Jim & Nancy Azarski	Samba Fall	Barbara Lindeke
Donna Becker	Bill Foss	Becky Lourey*
Susan & Mark Behrends	Lois Gernbacher	Tom & Phyllis Mahan
Berchin's A&W Restaurant	Michael & Teresa Hejny*	William & Candace Marx
Judith Brumfield*	Julie & Brian Holly	Deborah & Ronald McCabe
Amy Daly*	Kendall-Milton Charitable Trust	Dennis & Margaret Meyer
Brian & Alena DeYoung*	Roger Knudson	Carol Mizuno

*Osprey Wilds Sustainer

\$500-\$999 Cont.

Jean Nelson	Patricia Rainer*	Thrivent Financial for Lutherans
Lois Norrgard*	Ashley Roemhild*	Elaine Thrune
Northern Pine Riders Snowmobile Club	Michelle Rozales	U.S. Bank Charities Aid Fdn
Northview Bank	St. Paul & MN Foundation	Zakelj Watkins Household
Bill & Sheila Owens	Schmidt Law + Consulting	
	Craig Stowell	

\$250-\$499

Erin Anderson*	Steve & Alice Gruber*	Jeanne Norrgard*
Tami & David Greenberg Bauers	Nancy Haugen	Polaris
Mary Beck*	Wesley Haut	Elizabeth Pomper*
Bill & Beth Blank	Sonja & Joe Hendrickson*	Jessica Prenzlown-Morgan
Loren & Rosemary Brabec*	Craig & Yvette Hewitt	Diana Rankin*
Heidi Bringman	Thomas Houle	Jill Rudolph*
Marcia Cheeseman	Dee & Greg Koivisto*	Deb & Rick Scheil
Robert & Rorie Chinnock	Jane & Randy Koza	Timothy Whitfeld*
Mike Clark	Candace Kyte	Mary Wickstrom
Daniel & Jeanne Doty	Karen Larson	Bryan Wood*
Elaine Duvall*	Kristen & James Lindberg	Neal Young
Rodney & Sue Foss	Margaret Lindstrom*	Jordan & Alissa Zabel
Nancy Gongoll	Matt & Maddy Masucci*	
Daniel Green	David Nelson*	

\$100-\$249

Michael & Laurie Fischer	Jane & Brian Kise	Gwen & Mason Myers
Rick Fletcher	Sherri & Daniel Leverty	Terry & Robert Nelson
Barbara Franklin	Mark Lex	Karen Nielsen
Monte Gomke	Mike Link	Jean & Joanne Oliphant
Anna May Goyette	Paul Lyons	Laureen Overway
Hanley Skinner Household*	Carol Mansfield	Janis & James Parkman
Marianne* Hauert	Nina Manzi	JoAnn & George Perdrizet
Annie & Oliver Hejny*	Howard & Lynne Markus	Pfaller Wolforth Household
John & Linda Hickman	Wendy Marty	William & Naomi Pomper
Barb & John Holm	Laureen & Kevin McCalib	Christine Pudney*
Bob & Judy Horn	Chester & Miriam Meyers	Julianne Ratliff*
Charles & Nancy Huber	Moench Family	Erik Rigelhof*
Paulette Huddle*	Gary & Patty Mondale	Joel & Gail Roberts
Amy Kersey	Charles & Diana Moore	Theron (Terry) Salmela

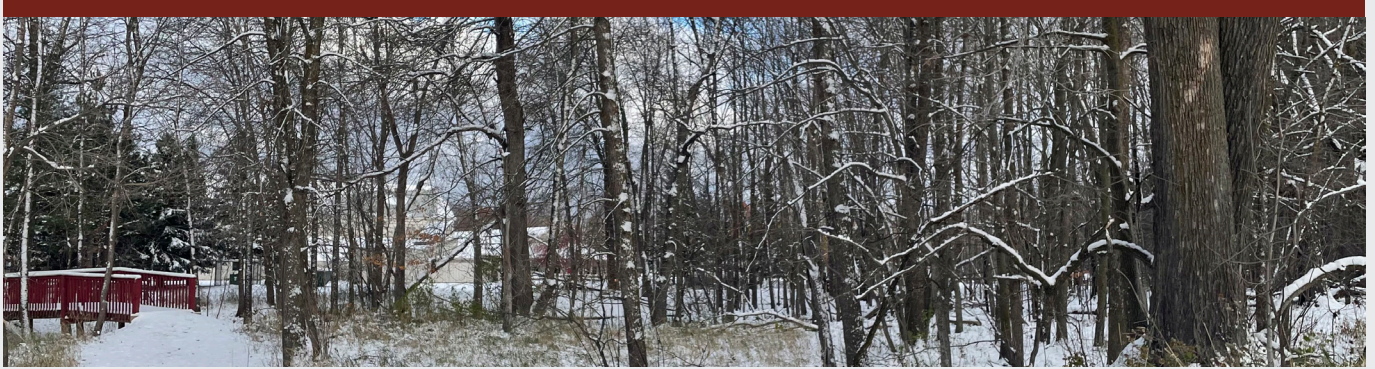
*Osprey Wilds Sustainer

\$100-\$249 Cont.

Eric & Jacquelyn Saunders
Amber Sausen
Eileen Schantz-Hansen
Kenneth Schirmuhly
Kevin & Christine Schneider
Darlene & Glen Scott

Carolyn Serrano
Jim & Mary Kay Sloan
Steve Smith
Sophia Strandberg
Stephen Sundquist
Ingrid Swanson

Barry Tedlund
Diane Tessari
Veronica Tingle
Tom Torborg*



\$5-\$99

Ross Anderson
Jeffrey Apland
Helen Balcome
Cindy Bean
Richard Bialek
Boeing
Mark Brigham*
Pat Cleveland
George & Mary Crambes
Kate Crowley
Dakota County Library
Adam De Leeuw
Alanna Dore
David Eagan
Kenneth Edstrom
Enbridge
Edward Evans
Barb Evers
Christa Fangmeier
Shari Flesness
Zach Garman
Carly Gelderman*

Gornick-Patton Household
Julie Greenberg
Bob & Marce Hemming
Ruth Hiland
Shirley Howell
Richard & Lynn Huebsch
Rob Jarvias
Al & Lyn Johnson
Paul Johnson
Teresa Kempenich
Scott Kluegel
Louise Kneeland
Josette Koets
Dee Kotaska
Barbara Krig*
Steve Kuchera
Sabrina Lau
Louise Letnes
Elsie Lundorff
Savannah Maiers
Laverne Mans
Jeanne Markell

Steven & Laura McCaughan
Emily McNeil
Craig & Laurie Meyer
Nadine Meyer
Don & Elisa Mill
Jenna Moon
Neumann Penny Household
Mary & Dan Nicklay
Kate Nicoletti
Dale Nordquist
Anne Odberg
John & Yvette Oldendorf
Gayla & Dennis Olson
Margaret & Larry Peitersen
Amy Peterson Brookman
Justin Peterson
Cheryl Ramette
Richard Hamilton Smith
Photography
Donna Rogers
Katherine Salverda
Beverly Schleper

*Osprey Wilds Sustainer

\$5-\$99 Cont.

Karl Smith	Jared VanSpeybroeck
Gerald Stark	Jane Wachutka
Gale Toensing	Pete & Pat Webster
Nancy Jo Tubbs	Wells Fargo Foundation
Turner Rodine Household	James Willenbring
Gary & Bonnie Van Erp	Barb & Carl Wojahn
Sue & Don VanGorden	Douglas & Kathy Wood



In Memory of

Katherine Bade	Hope H. Lea	Jerry Wagner
Mary Clark	Lawrence & Mary Mans	Joe White
Chris Crutchfield	Ray & Sylvia Marcotte	Carl Johan Wiberg
Matthew Green	Stanley Meyer	Ernie Willenbring
George Knuteson	Fred Nylene	
Paul Larson	Wesley "Burt" Sundquist	

In Honor of

Don & Meg Arnosti
Betty Crosby
Lee & Dorothy Dybvig
Elaine
Regina Lobner
Steve & Sue McNeil
Jessica Prenzlows-Morgan
Staff, Directors & Volunteers
Wesley "Burt" Sundquist
Emma Tingle

We make every effort to ensure the accuracy of this list. If you notice any errors, please accept our apologies and contact us with the needed corrections at 320-245-7791 or development@ospreywilds.org.



Osprey Wilds

Environmental Learning Center



Platinum
Transparency
2025

Candid.

54165 Audubon Drive
Sandstone, MN 55072
OspreyWilds.org
320-245-2648