



Osprey Wilds
Environmental Learning Center

Campus Map

Our Mission:

To instill a connection and commitment to the environment in people of all communities through experiential learning

Our Vision:

A healthy planet where all people live in balance with the Earth

54165 Audubon Drive
Sandstone, MN 55072
320-245-2648

OspreyWilds.org

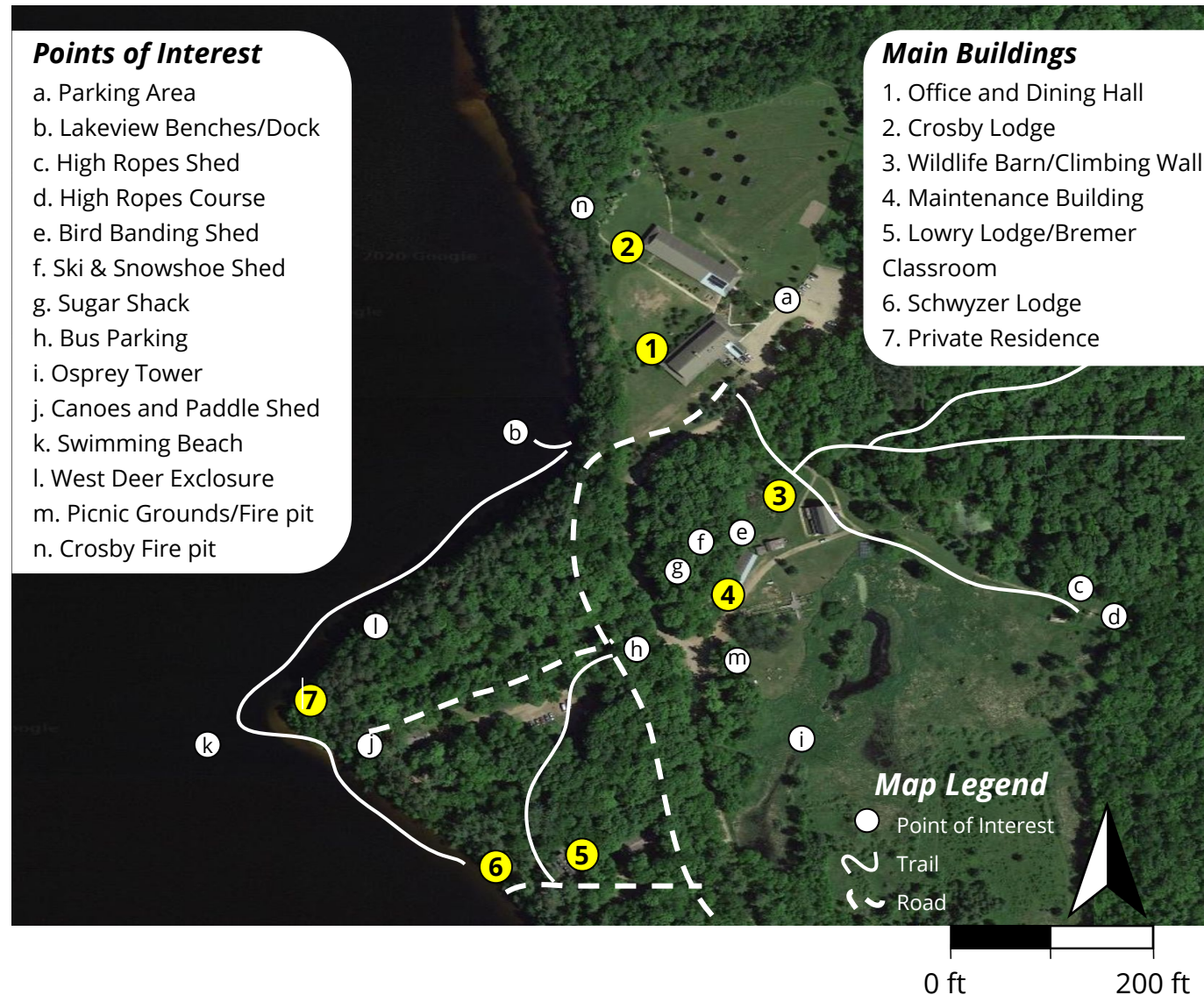


Points of Interest

- a. Parking Area
- b. Lakeview Benches/Dock
- c. High Ropes Shed
- d. High Ropes Course
- e. Bird Banding Shed
- f. Ski & Snowshoe Shed
- g. Sugar Shack
- h. Bus Parking
- i. Osprey Tower
- j. Canoes and Paddle Shed
- k. Swimming Beach
- l. West Deer Enclosure
- m. Picnic Grounds/Fire pit
- n. Crosby Fire pit

Main Buildings

- 1. Office and Dining Hall
- 2. Crosby Lodge
- 3. Wildlife Barn/Climbing Wall
- 4. Maintenance Building
- 5. Lowry Lodge/Bremer Classroom
- 6. Schwyzer Lodge
- 7. Private Residence



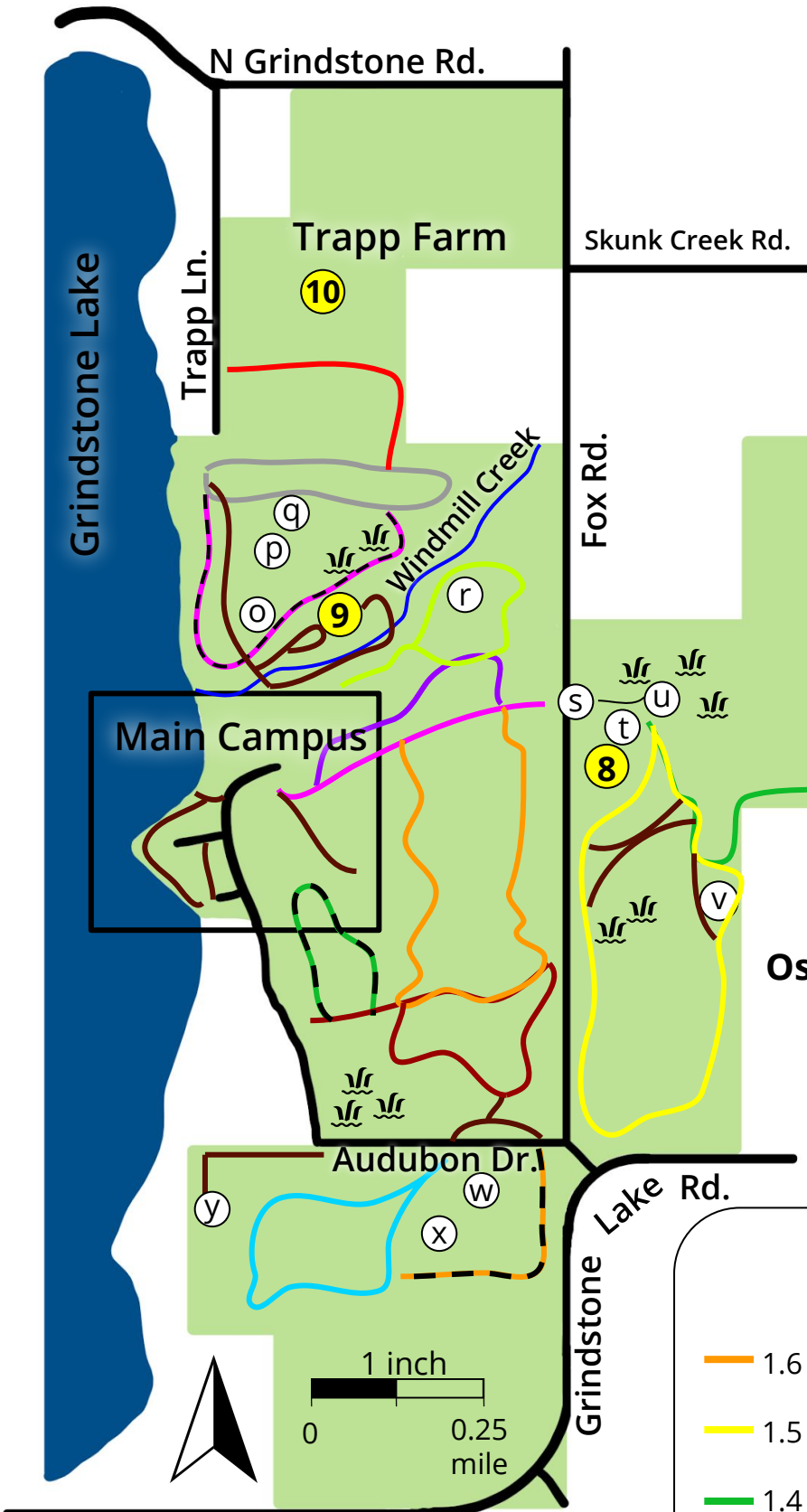
Osprey Wilds is a non-profit 501(c)(3) residential environmental learning center for people of all ages. As an accredited school, we offer programs for K-12 and college students, as well as family, adult, senior, and community members. Our programs focus on environmental sciences, outdoor recreation, team-building, energy, wildlife, local culture, and history.



Osprey Wilds

Environmental Learning Center

Trail Map



- Points of Interest:*
- 8. Wetlands Cabin**
 - 9. Yurt**
 - 10. Hoop House**
 - o. Low Ropes Challenge Course
 - p. Archery Range
 - q. Replica Cultural Site
 - r. East Deer Enclosure
 - s. Wetlands Area Parking
 - t. Wetlands Primitive Campground
 - u. Wetlands Boardwalk
 - v. Observation Tower
 - w. NOAA Climate Station
 - x. Tallgrass Prairie Area
 - y. White Pine Primitive Campground

Map Legend

- Point of Interest
- ⋈ Wetland
- Road
- ~ Trail

Osprey Wilds Property = 783 acres

Trail Distances

Total: 12.1 miles

- | | | | |
|----------|----------|----------|----------|
| — 1.6 mi | — 0.9 mi | — 0.8 mi | — 0.4 mi |
| — 1.5 mi | — 0.9 mi | — 0.7 mi | |
| — 1.4 mi | — 0.8 mi | — 0.7 mi | |
| — 1.0 mi | — 0.8 mi | — 0.6 mi | |