



# Osprey Wilds

Environmental Learning Center

## Main Campus Map



### Our Mission:

*To instill a connection and commitment to the environment in people of all communities through experiential learning*

### Our Vision:

*A healthy planet where all people live in balance with the Earth*

PO Box 530

54165 Audubon Drive  
Sandstone, MN 55072

320-245-2648

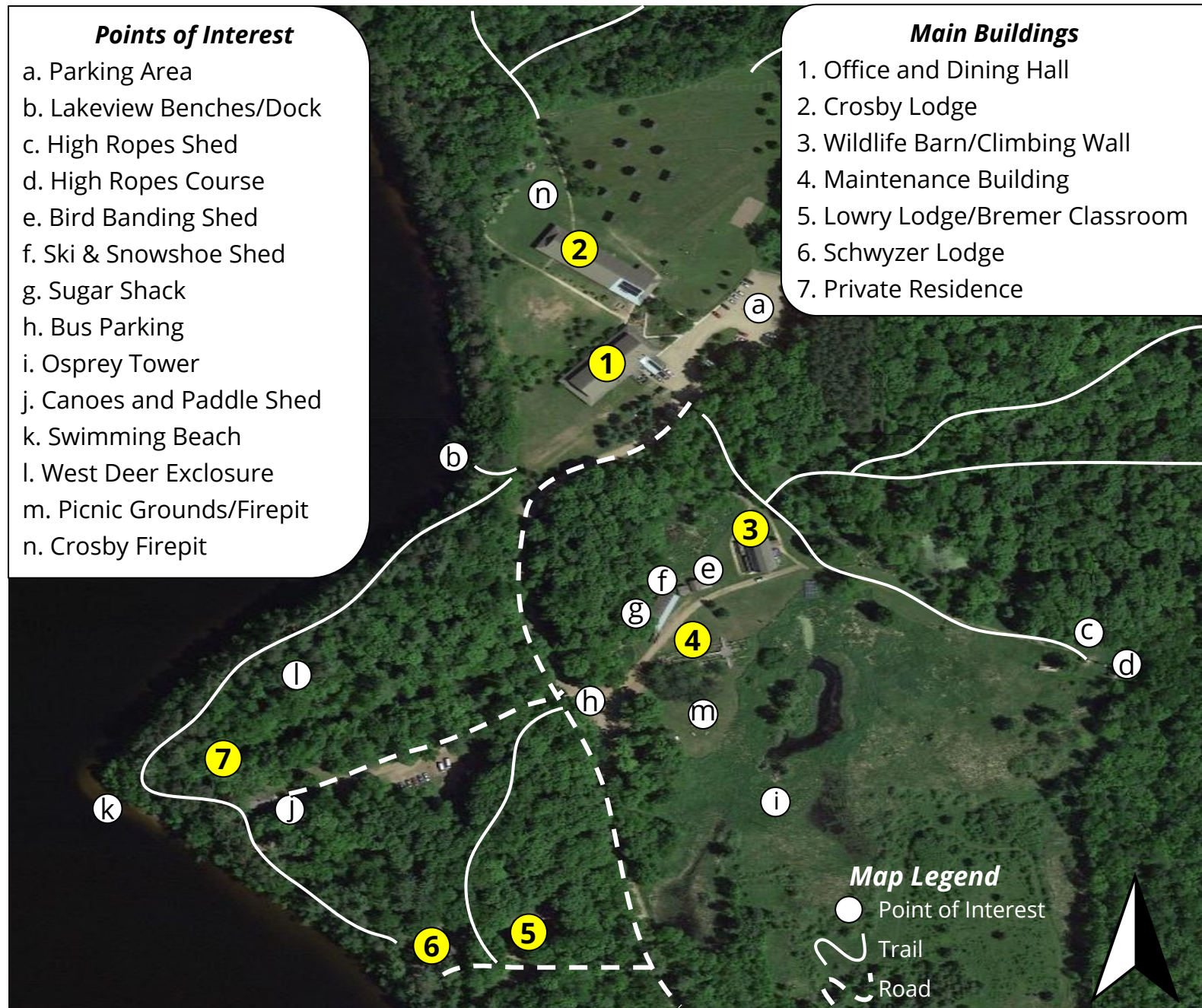
**OspreyWilds.org**

### Points of Interest

- a. Parking Area
- b. Lakeview Benches/Dock
- c. High Ropes Shed
- d. High Ropes Course
- e. Bird Banding Shed
- f. Ski & Snowshoe Shed
- g. Sugar Shack
- h. Bus Parking
- i. Osprey Tower
- j. Canoes and Paddle Shed
- k. Swimming Beach
- l. West Deer Exclosure
- m. Picnic Grounds/Firepit
- n. Crosby Firepit

### Main Buildings

- 1. Office and Dining Hall
- 2. Crosby Lodge
- 3. Wildlife Barn/Climbing Wall
- 4. Maintenance Building
- 5. Lowry Lodge/Bremer Classroom
- 6. Schwyzer Lodge
- 7. Private Residence



Osprey Wilds is a private, non-profit 501(c)(3) residential environmental learning center for people of all ages. As an accredited school, we offer programs for K-12 and college students, as well as family, adult, senior, and community members. Our programs focus on environmental sciences, outdoor recreation, team-building, energy, wildlife, local culture, and history.



# Osprey Wilds

Environmental Learning Center

## Trail Map

### Points of Interest:

**8. Wetlands Cabin**

**9. Yurt**

**10. Hoop House**

o. Low Ropes Challenge Course

p. Archery Range

q. Replica Cultural Site

r. East Deer Enclosure

s. Wetlands Area Parking

t. Wetlands Primitive Campground

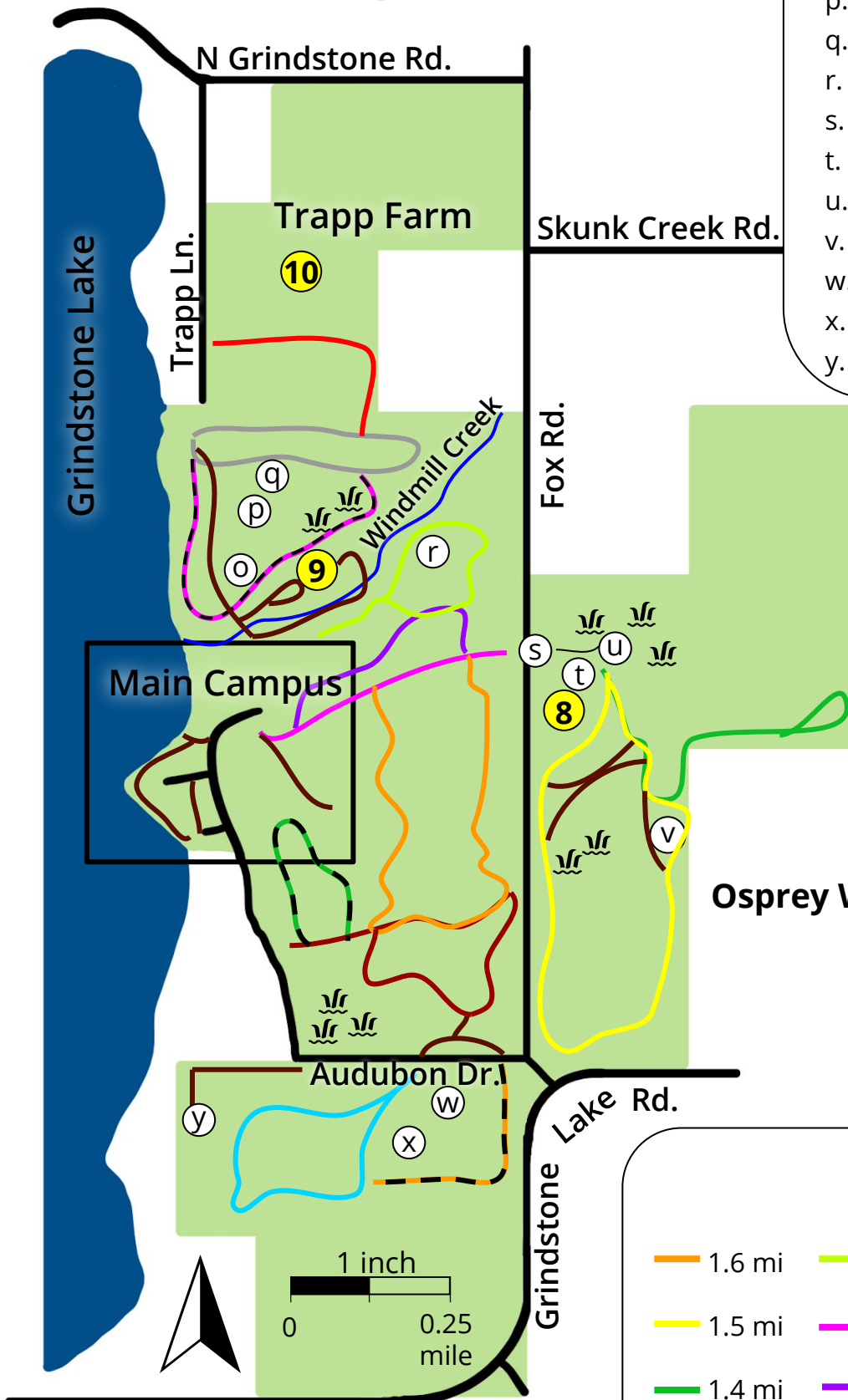
u. Wetlands Boardwalk

v. Observation Tower

w. NOAA Climate Station

x. Tallgrass Prairie Area

y. White Pine Primitive Campground



### Map Legend

○ Point of Interest

Wetland

~ Road

~ Trail

**Osprey Wilds Property = 783 acres**

### Trail Distances

Total: 12.1 miles

1.6 mi	0.9 mi	0.8 mi	0.4 mi
1.5 mi	0.9 mi	0.7 mi	
1.4 mi	0.8 mi	0.7 mi	
1.0 mi	0.8 mi	0.6 mi	